

THIRTY-SEVENTH KARNEA

August 26-27-28, 1903

Headquarters, Hollenden Hotel
Cleveland, Ohio

The Rainbow

Vol. XXVI

JUNE, 1903

No. 4

Gamma Eta and Columbian University

WASHINGTON, D. C.

At Columbian University, Washington, D. C., an institution with nearly fifteen hundred enrollment, and with a more distinguished faculty than any institution of learning in the United States, a new star has risen in the Delta firmament. Into the ancient and honorable Fraternity there has come, bespeaking for itself a welcome, a new chapter. The child is born and its name is Gamma Eta. Not rich in Fraternity tradition, bearing no long and honorable Delta lineage, does this new-comer appear in the Fraternity circle. But thrilling with life, instinct with energy and already fired with zeal to emulate the achievements of sister chapters, Gamma Eta begins what its charter members feel must, in the nature of things, be a successful career.

And when we say that Gamma Eta begins its work without fraternity tradition we err on the side of modesty, for among our number are members of chapters which have gained enviable places in Delta annals. The founder of this Chapter is a member of Beta Eta, one of the leading chapters. Associated with us is a member of Epsilon, and a member of Alpha,

the "Choctaw Chapter," once the ruling chapter at Meadville, Pa., whence issued the *Crescent* in the days before THE RAINBOW had thrown its brilliant arch over the length and breadth of the Order. Also a member of Xi and a member of Beta Gamma. These members have already inspired us with the enthusiasm and loyalty to the purple, white and gold. This spirit was first engendered in a literary organization at the beginning of the term 1901-'02. In order to perpetuate this spirit and strengthen the bond of fellowship which was in a manner formed it was deemed expedient to have recognition by a National fraternity, and thus began the active work which culminated in the installation of Gamma Eta. At the beginning progress was retarded, owing to the fact that we had only to offer our prospective members the possibility of becoming charter members of a chapter then existing only in zeal and enthusiasm. The object and purpose of this movement soon led to the election of officers; regular meetings were held every week and the season of our rushing began in competition with several fraternities.

About the close of December last we were visited by Fred S. Tyler, of Beta Iota, whose words of encouragement proved an inspiration to every one, and on his report of our prospects and standing his chapter immediately endorsed our movement. After our petition had been submitted for the consideration of the Arch Chapter, we had the pleasure of entertaining Mr. McClary, President of the Eastern Division, on his official visit, and Mr. William Lang. The suggestions made by Mr. McClary and the manifest interest of both him and Mr. Lang in the fraternal atmosphere at that time pervading our circle, and the enthusiasm which so well exemplified our environments, gave us new assurance of success. We also had the honor of receiving the Secretary of the Arch Chapter, Mr. Henry T. Brück, who, in a most conservative manner, made thorough inquiries regarding our intentions and policy.



THE UNIVERSITY BUILDING.

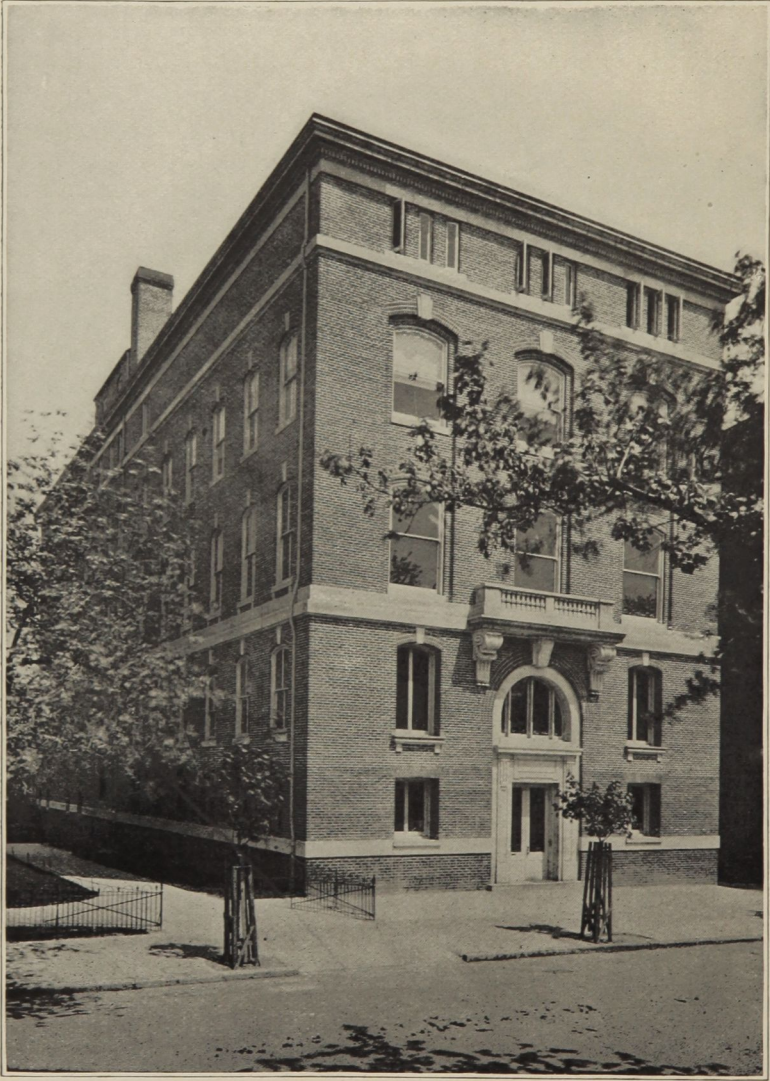
COLUMBIAN

When the welcome and eagerly awaited news came that the charter had been granted little time was lost in arranging for the installation, which took place May 9, 1903. The installation ceremonies were held at the Shoreham, and after each neophyte had been lead through the devious mazes of Delta mysteries and vested with the dignity of membership, the graver and more important part of the program gave way to festal rejoicing, and the first birthday of Gama Eta was celebrated at the banquet board. The discussion of an elaborate menu and the brilliant and humorous responses to many well-selected toasts, thus welcomed the infant chapter in the Greek Letter World.

The men composing Gamma Eta are in the front ranks of University affairs. Lee F. Warner, Beta Eta ex. '03 Minnesota, Founder of the Chapter, to whose initiative energy and perseverance in the establishing of the Chapter much credit is due, was Captain Base Ball Team, season 1902; Charles S. Loud, Epsilon, ex. '00, Michigan; Clyde W. Kelly, Minnesota, Manager Base Ball Team; James R. Raley, Oregon, Member Glee Club; Carney M. Layne, Ohio, President Law Class, '04; James G. Shibley, Kansas, Chairman Executive Committee Law, 1904; Oliver P. Jones, Texas; R. Bruce Atkinson, District of Columbia, President Architectural Class; William Heine, District of Columbia, Right Guard Varsity Foot Ball Team; Samuel T. Klawans, Maryland, Manager Columbian University Dramatic Club; Charles F. Fuller, New York, Press Representative Law, 1904; Clair W. Fairbank, Minnesota; James Taylor Petty, Ph. D., Alpha '88, Pennsylvania, President Jurisprudence and Diplomacy, 1904; Oran H. Wood, Xi, '94, Utah; Charles Elmer Connor, Beta Gamma, ex. '03, Wisconsin; Ralph Earnest, District of Columbia, Member Varsity Base Ball Team; Philip Buettner, Wisconsin, Glee Club; William W. Burrell, Pennsylvania, Glee Club; James G. Stanley, South Dakota; Alexander B. Bielaski, District of Columbia, Captain Base Ball Team, season 1903; James B

Rickard, Hawaii; William C. Thom, District of Columbia, President Junior Scientific Class, and Frank Hemmick, Maryland.

Columbian University, situated in the heart of Washington, within a block of the United States Treasury, is now in the eighty-second year of its existence, and has an enrollment of 1500. Connected with the University as members of the faculties, and as lecturers, are men of National and international reputation, among whom are the following: Hon. John M. Harlan, LL. D., and the Hon. David J. Brewer, LL. D., Associate Justices of the Supreme Court of the United States; the Hon. John W. Foster, LL. D., ex-Secretary of State; the Hon. Stanton J. Peelle, LL. D., Judge of the United States Court of Claims; the Hon. Willis Vandevanter, Judge of the United States Circuit Court; the Hon. Hannis Taylor, LL. D., ex-Minister to Spain; the Hon. John Barrett, Minister to Japan and ex-Minister to Siam; the Hon. Martin A. Knapp, LL. D., Chairman Interstate Commerce Commission; the Hon. Carroll D. Wright, LL. D., Commissioner of the Department of Labor; the Hon. William A. Maury, LL. D., Member Spanish Treaty Claims Commission; the Hon. Ainsworth R. Stafford, LL. D., Assistant Librarian of Congress; and the Hon. William T. Harris, LL. D., United States Commissioner of Education. The influence and example of such men develop personal forces in education that cannot be equalled elsewhere in the country. The Law School of Columbian University, in enrollment, is fifth in size in the United States, and has, beyond a doubt, a stronger faculty than any other law school in this country. The School of Comparative Jurisprudence and Diplomacy, founded by Charles W. Needham, LL. D., now President of the University, the design of which is to afford a training in the subjects of higher legal knowledge, the political history of the world, and the science and practice of Diplomacy and International Law, is the only school of its kind in the United States. The College, the Scientific School



COLUMBIAN—THE NEW MEDICAL BUILDING

and the School of Graduate Studies in addition to the regular courses, which are in every respect thorough, have special courses of scientific and technical training, affording opportunities for more extensive research in the higher fields of knowledge than any other institution of this kind. The Schools of Medicine and Dentistry have strong faculties and have this season erected and occupied a new lecture hall and a new hospital.

Gamma Eta Chapter meets here the following fraternities: Sigma Chi, Phi Kappa Psi, Theta Delta, Chi, Kappa Sigma, Phi Delta Phi, Sigma Kappa and Kappa Alpha, besides many local Greek Letter Societies. Several of these fraternities have houses and the rest have rooms. Among the more than fifty Deltas who are resident in the city of Washington, it is highly probable that an alumni chapter can be organized in the near future, as they manifested much interest in the establishing of an active chapter here. Much credit is due them for their able assistance and valuable suggestions.

Thus briefly, we have set forth the history of the movement which culminated in adding Gamma Eta to the illustrious list of sister Chapters whose affiliation preceded ours. Here you have something respecting our personnel, our University and Hellenic rivals. As the youngest Chapter, we make our bow and welcome the hand of warm fraternal greeting.

C. M. LAYNE, '04.